

# Israel Ring Tourney - Helpmates 2009

*Judge: Michael McDowell (Great Britain) FIDE International Judge*

The overall standard was lower than normal for the IRT and little was revealed in the way of true originality. A number of problems gain their awards for being neat renderings of familiar ideas or combinations of ideas. Of the problems not honoured I would like to mention 1908 by Steven Dowd and Mirko Degenkolbe, whose diverse solutions make for entertaining solving, but whose matrix was better used in A, also 2019 by the late Andrej Lobusov, an attractive problem which I feel is too close to partial anticipations such as B and C. My thanks to Uri Avner for the invitation to act as judge, and to Zivko Janevski for his help with checking for anticipations.

## Prize: Vm 1954 Abdelaziz Onkoud

An interesting and well-unified idea. The black queen must move to allow a white piece to pass across e4, and thanks to the clever placing of the white king and f4 bishop is restricted to a capture, which results in a Zilahi. In each case the queen's arrival frustrates the mate, solving the problem of forcing a destination for the knight which must unguard the mating square. The captures of rook and bishop look crude, but in addition to stopping queen moves those pieces guard against a bishop mate at e4.

1. ♖xg6 ♜xe6 2. ♗f6 ♜d6# 1. ♖xe2 ♗xc2 2. ♗d3 ♗b3#

## 1<sup>st</sup> Honorable Mention: Vm 1960 Alexandr Pankratiev

Surprisingly economical for a problem where White may have two queens after his first move. Only the repetition of Kc5 is a slight pity, though it is difficult to see how it could be avoided.

1... ♖xb4 + 2. ♗xb4 f8=♖ + 3. ♗a5 ♖a3#; 1... ♖xc4 + 2. ♗xc4 f8=♖ 3. ♗c5 ♜c8#

1... ♖xd4 + 2. ♗xd4 f8=♗ 3. ♗c5 ♗e6#

## 2<sup>nd</sup> Honorable Mention: Vm 1955 Valerio Agostini

Two well matched sequences showing consecutive selfpins of a black piece with white unpins and line-opening. The construction is very clear.

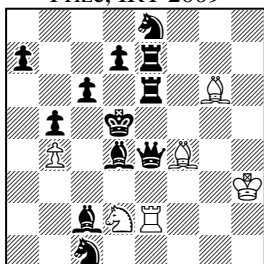
1. ♗xc4 ♗c3 2. ♗xe5 ♗xe2# 1. ♗xc4 ♗c3 2. ♗xd5 ♗xb2#

## 1<sup>st</sup> Recommendation: Vm 1953 György Bakcsi

Unusual echoed models involving promotions to bishop. The lack of difficulty might lead the solver to dismiss the problem as trivial, however the fact that underpromoting is necessary when each time White can immediately queen with check is extremely paradoxical!

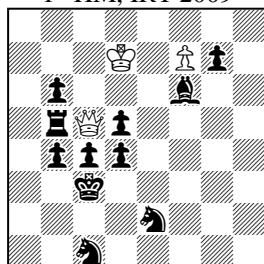
a) 1. ♖h8 c8=♗ 2. ♖f8 ♗cxd7# b) 1. ♗f8 h8=♗ 2. ♗he8 ♗g7#

**Abdelaziz Onkoud**  
Prize, IRT 2009



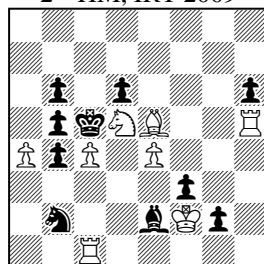
H#2 2.1.1.1 6+12

**Alexandr Pankratiev**  
1<sup>st</sup> HM, IRT 2009



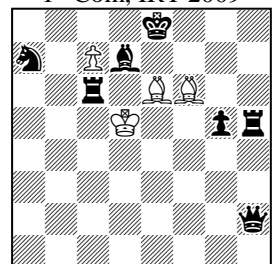
H#2.5 3.1.1.1 3+11

**Valerio Agostini**  
2<sup>nd</sup> HM, IRT 2009



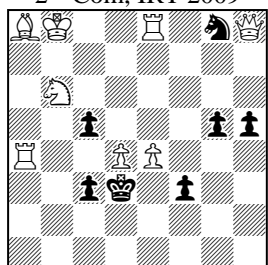
H#2 2.1.1.1 8+10

**György Bakcsi**  
1<sup>st</sup> Com, IRT 2009



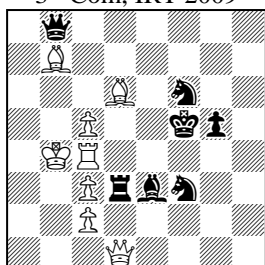
H#2 b) ♗c7→h7 4+7

**Alexandr Pankratiev**  
2<sup>nd</sup> Com, IRT 2009



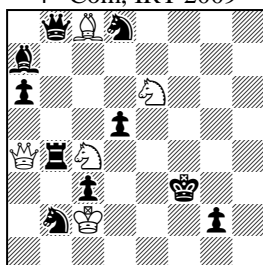
H#2 2.1.1.1 8+7

**Abdelaziz Onkoud**  
3<sup>rd</sup> Com, IRT 2009



H#2 2.1.1.1 8+7

**Christer Jonsson**  
4<sup>th</sup> Com, IRT 2009



H#2 2.1.1.1 5+10

**Yosi Retter**  
5<sup>th</sup> Com, IRT 2009



H#2 2.1.1.1 4+10

**2<sup>nd</sup> Recommendation: Vm 1956 Alexandr Pankratiev**

As in 1960 the black king must clearly move north, which helps to achieve good economy. It is surprising given the well-worn nature of the idea that this setting appears to be original.

1. ♖e7 ♘d5 2. ♜xe4 ♚h7# 1. ♜f6 ♘c4 2. ♜xd4 ♜d8#

**3<sup>rd</sup> Recommendation: Vm 2016 Abdelaziz Onkoud**

A pleasing example of anticipatory self-pin with sacrifices for unguard and pin-mates on the squares vacated by the pinned black pieces, although the blocking in of the rook and the pawn at c2 lack subtlety. This problem is much better than the same composer's 1893, in which one of the rook moves has a double purpose.

1. ♜d5 ♜e4 2. ♜xe4 ♘d3# 1. ♖e5 ♜f4 + 2. ♜xf4 ♜f3#

**4<sup>th</sup> Recommendation: Vm 1952 Christer Jonsson**

Black opens two white lines then unguards the mating square with an interference. Perfect balance would require a bishop mate, but the problem is nicely constructed.

1. ♜xc4 ♘xa6 2. ♜c7 ♜f4# 1. ♖xe6 ♜e8 2. ♘c5 ♜e3#

**5<sup>th</sup> Recommendation: Vm 1951 Yosi Retter**

A matrix which is a little unlucky. Two shut-offs of pieces attacking the mating line would be preferable, but as this would require a third black rook the composer had to choose between an obvious mismatch involving one cross-check, or a more concealed one by introducing a second cross-check on the c-file, though this is not necessary to force the mating move. A black pawn could replace the knight at g3.

1. ♜dc2 ♖e4 2. fxe4 + ♜d7# 1. ♜g5 ♘d3 2. cxd3 + ♜c4#

**6<sup>th</sup> Recommendation: Vm 2024 Israel Tzur & Misha Shapiro**

An intensive rendering of a familiar bishop line-clearance manoeuvre. Artistic compromises are often necessary when showing a task, as illustrated here by the consecutive twinning, including a move of the black king, and the captures twice employed to halt the thematic white bishop's progress, but the idea is worthwhile.

a) 1. ♜h6 ♘xd6 2. ♖e5 ♘f5 3. ♘g7 ♘f4# b) 1. ♜h7 ♘xd7 2. ♖e6 ♖e5 3. ♘g8 ♘f5# c) 1. ♜a5 ♘b8 2. ♖d6 ♘xd7 3. ♘b4 ♘c7# d) 1. ♜a4 ♖c8 2. ♖e6 ♖e1 3. ♘b3 ♘d7#

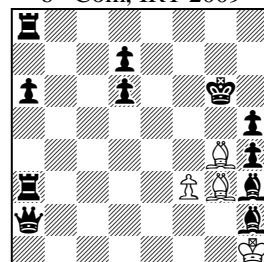
**7<sup>th</sup> Recommendation: Vm 1889 Toma Garai**

Interesting reciprocal pinning and interference effects, plus two mating moves to g5. The balance of the solutions is spoiled by the fact that Sf4 is also a selfblock. A curious feature of the construction is that the white king must stand stalemated, to prevent a cook in b) by 1. Kf5 pass 2. Sf4 Rxc5.

a) 1. ♘f5 ♜g3 2. ♜e3 ♘xc5# b) 1. ♜e5 ♘g7 2. ♘f4 ♜xc5#

**Israel Tzur**  
**Misha Shapiro**

6<sup>th</sup> Com, IRT 2009



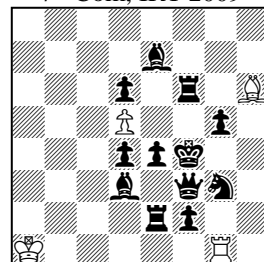
H#3 b) ♖d6→h6 4+11

c) b+ ♜g6→b5

d) c+ ♖d7→d6

**Toma Garai**

7<sup>th</sup> Com, IRT 2009



H#2 b) ♘g3→g2 4+12