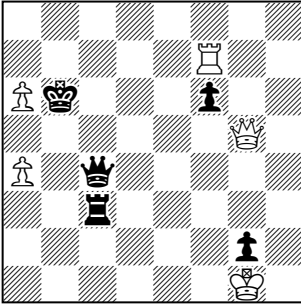


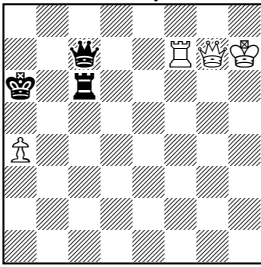
D51. Yehuda Hoch

1st Pr. Mandil MT, 1980

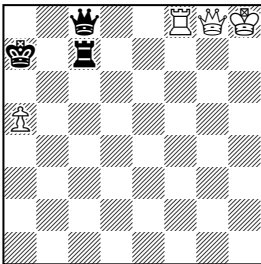


win 5+5

51A Thematic try 11... ♖xa6



51B Solution 15... ♖a7



Thematic try:

1. ♖xf6+? ♖a7 2. ♖g7+ ♖c7 3. ♖f7 ♖c1+ 4. ♖xg2 ♖c2+ 5. ♖f3 ♖c3+ 6. ♖e4 ♖c4+ 7. ♖d5 ♖c5+ 8. ♖e6 ♖c6+ 9. ♖f5 ♖c5+ 10. ♖g6 ♖c6+ 11. ♖h7 ♖xa6! (51A) 12. ♖xc7 ♖xc7 13. ♖xc7 stalemate.

Solution:

1. a5+ ♖xa6 2. ♖xf6+ ♖a7 3. ♖g7+ ♖c7 4. ♖f7 ♖c1+ 5. ♖xg2 ♖c2+ 6. ♖f3 ♖c3+ 7. ♖e4 ♖c4+ 8. ♖d5 8. ♖f5? ♖f4+ 9. ♖g6 ♖xf7 8... ♖c5+ 9. ♖e6 ♖c6+ 10. ♖f5 ♖c5+ 11. ♖g6 ♖c6+ 12. ♖h7 ♖a8 13. ♖g8+ 13. ♖xc7? ♖xc7 14. ♖xc7 13... ♖c8 14. ♖f8 ♖c7+ 15. ♖h8 ♖a7! (51B) 15... ♖b8 16. a6 ♖xf8 17. ♖xf8+ ♖c8 18. a7+ ♖b7 19. ♖xc8+

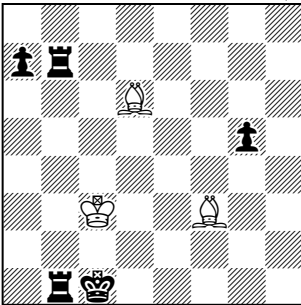
Compare 51A (thematic try) and 51B (solution). All 7 pieces have moved one rank up. What is the difference? **16. ♖g1+!!** wins.

Complete 7-piece chameleon echo between try and solution with the chessboard's geometry making the difference.

Themes: Logical maneuver, Chameleon echo.

D52. Ofer Comay

Schakend Nederland 1980 (v)



win 3+5

1. ♖a3+ ♖7b2 2. ♖e2!! (2... ♖h5? ♖a1! 3. ♖xb2+ ♖b1 4. ♖b3 ♖a6!; 2... ♖g4? a5! zz 3... ♖e2 a4! zz 4... ♖g4 ♖a1 5. ♖xb2+ ♖b1 6. ♖f5+ ♖a2 7. ♖c2 ♖e1 8. ♖d3 ♖e3 9. ♖c4+ ♖b3 10. ♖d5 g4!) 2... a6! (2... ♖a1 3. ♖xb2+ ♖b1 4. ♖b3) 3. ♖h5!! a5 (3... ♖a1 4. ♖xb2+ ♖b1 5. ♖b3 and black cannot play ♖a6) 4. ♖g4! zz a4 (4... ♖a1 5. ♖xb2+ ♖b1 6. ♖f5+ ♖a2 7. ♖c2 ♖e1 8. ♖d3) 5. ♖e2! zz g4 (5... ♖a1 6. ♖xb2+ ♖b1 7. ♖d3+ ♖a2 8. ♖c2) 6. ♖xg4 ♖a1 7. ♖xb2+ ♖b1 8. ♖f5+ ♖a2 9. ♖c2 ♖e1 10. ♖d3 ♖e3 11. ♖c4+ ♖b3 12. ♖d5 wins.

Themes: Zugzwang.