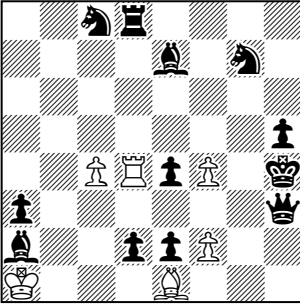


**E13. Zvi Roth & Jean Haymann**

*3rd Pr. Die Schwalbe 1974*



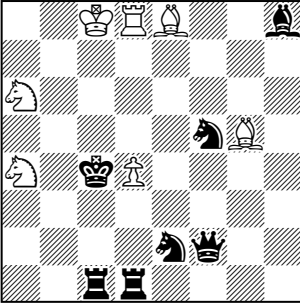
H#3 2.1.1.1 6+12

1. ♖d7 c5 2. ♗e6 ♜xd2 3. ♗h3 f3#  
 1. ♖b3 ♝xe4 2. ♞d3 ♗xd2 3. ♞h3 f5#.

Theme: Turton, Line opening, Self-blocks, Battery mates

**E14. Jean Haymann**

*2nd Pr. Israel Ring Ty 1974*



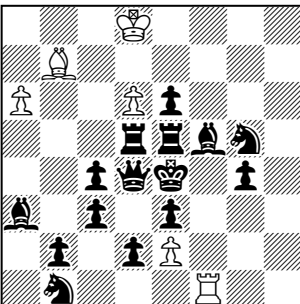
H#2 2.1.1.1 7+7

1. ♗exd4 ♗d2! (♗f6??) 2. ♗b5 (♗b3?) ♗f7#  
 1. ♗fxd4 ♗f6! (♗d2??) 2. ♗b3 (♗b5?) ♗b2#

Themes: Dual avoidance, Interferences, Self-blocks

**E15. Shlomo Seider**

*Schach-Echo 1976*



H#3 2.1.1.1 6+15

1. ♗xd6 ♝c1 2. ♖c5 ♝xc3 3. ♖a3 ♝xc4#  
 1. ♖a7 ♗c6 2. ♗c5 ♗a4 3. ♗d4 ♗c2#

Themes: Turton, Hideaway